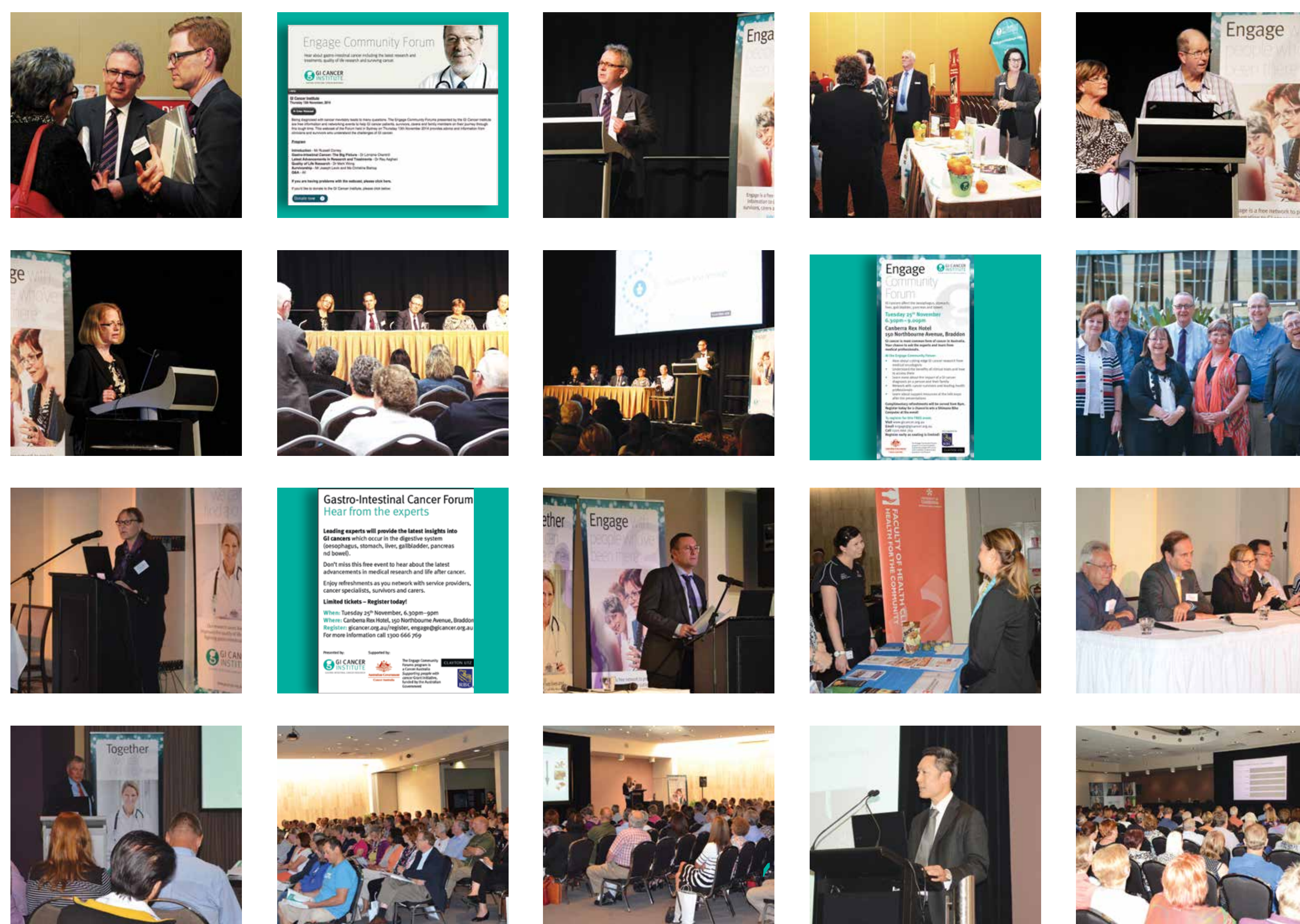




GI CANCER INSTITUTE

GASTRO-INTESTINAL CANCER RESEARCH



Survivorship Conference, 6-7 Feb 2015, in Adelaide

Engage Community Forums

Engage Community Forums to raise awareness of Gastro-Intestinal cancers – an initiative led by GI Cancer survivors and carers.

Authors: GI Cancer Institute/Australasian Gastro-Intestinal Trials Group (GICI/AGITG) Consumer Advisory Panel (CAP)

Introduction:

GI cancer survivor and carer members of the GICI/AGITG Consumer Advisory Panel have been the drivers of a series of Forums to raise community awareness about gastro-intestinal cancers, treatments, clinical trials, support services and survivorship. This is known as the 'Engage' program.

Method:

GICI/AGITG CAP members guided the development of the Engage program, selection of speakers and relevant local contacts, groups and cancer support organisations.

GICI/AGITG staff provided the support necessary to implement the Forums.

The program to date has included expert clinician speakers on the topics of

- GI Cancer - the Big Picture,
- Latest Advancements in Research and Treatments,
- Quality of Life Research

together with a GICI/AGITG CAP or community member presenting

- Survivorship - their 'survivorship' experience story.

Ample time for questions was followed by an opportunity for further engagement as participants partook of refreshments and expo-style displays by organisations such as Colostomy Association, Cancer Council, Look Good Feel Better, to name but a few.

Results:

Engage Community Forums were held in Sydney, Melbourne, Adelaide, Brisbane, Perth, Canberra and Western Sydney in 2013–2014.

838 people attended in total, and highly positive feedback was obtained.

A further series of 'Engage' forums in rural and regional areas during 2015–16 is supported by a Cancer Australia Supporting people with cancer Grant initiative, funded by the Australian Government. Regional forums commence in Central Qld in March 2015.

Conclusions:

Engage Community Forums are a collaboration between survivors, carers, GICI/AGITG, cancer clinicians and local communities. It is a novel model that hopefully will address regional inequalities in cancer outcomes and other local health issues, improve bowel cancer screening numbers and increase clinical trial participation.



Australian Government
Cancer Australia

The Engage Community Forums program is a Cancer Australia Supporting people with cancer Grant initiative, funded by the Australian Government

Also supported by:

CLAYTON UTZ

